



**唐山市兴发工业有限责任公司**  
**Tangshan xingfa industry Co.,Ltd**

开发高新产品 铸造兴发品牌

地址Add: 河北省唐山市丰润区动车城园区  
Fengrun district EMU industrial Park,  
Tangshan City, Hebei Province  
电话Tel: 0315-5130056 0315-3234397  
传真Fax: 0315-5130089 0315-5130056  
E-mail: tsxfgy@sina.com  
网址Web: www.ts-xf.com

中国·唐山



# C 公司简介 Company introduction

唐山市兴发工业有限责任公司是一家具有独立法人资格，自主经营的民营企业。唐山（丰润）·中国动车城，是国家高速动车组高新产业化基地，坐落在凤凰涅槃的河北省唐山市丰润区。

丰润，北枕燕山，凤峙虎踞，南襟渤海，鱼跃龙翔，山海之间，唐山动车之城赫然出现在共和国版图显著位置上，环京津、环渤海，京津冀经济一体化协同发展，赋予唐山动车城强大的生命力。兴发公司综合办公大楼及标准化车间就矗立在动车城中心位置上。

唐山市兴发工业有限责任公司始建于1992年，公司拥有注册资金1500万元，固定资产近亿元，占地面积约5万平方米，已通过ISO9001质量体系认证，是一家从事机械设备制造，安装，调试，生产及维护为一体的全方位服务的企业。公司现有管理技术人员和技术工人约150余人，各种加工设备100余台，具有丰富的专业理论及生产实际经验。

公司本着“依靠科学技术、开发新产品、保障质量体系、铸造兴发品牌”的质量方针，和“诚信、创新、和谐、发展”的经营理念，以顾客满意为宗旨，不断开发新产品、新技术，为机械行业的发展做出贡献。

Tangshan xingfa industry Co.,Ltd (as short referred" xingfaCo.,Ltd") is a private enterprise with full legitimate corporate capacity.Tangshan (Fengrun),the CRH ( ChinaRailwayHighSpeed ) city of China,is the national CRH high-tech industrialisationbase located in nirvana city---Tangshan(Fengrun District),HebeiProvince,Chian.

Tangshan(Fengrun District) adjacents to Beijing and Tianjin with convient shipping, land and aviation transportation access ,the unique geographical position makes Tangshan(Fengrun District) a significant part of Beijing,Tianjin and Hebei economic integration ,which gives Tangshan (Fengrun),the CRH city of China Strong vitality.

Xingfa Co.,Ltd's comprehensive office building and standardization workshop Standing in the center of the CRH city.

Tangshan xingfa industry Co.,Ltd established in 1992, Possessing registered capital RMB 15 million yuan and fixed assets of nearly hundred million yuan,covering an area of about 50000 square meters,has passed CQC ISO9001,is professional manufacturer that is concerned with the installation, debugging, maintenance service of mechanical equipment.We now have about 150 employees,including managerial staff and proficient skilled workers, Various equipments and devices more than 100 units,solidtheroretical knowledge and rich practical experience.

Under the spirit of "believe science,keepinnovating,premiumquality,excellent brand-reputation", We run our company with goal of satisfy customer and sincerity of making effort for industry development.





## P 产品介绍 product introduction

公司根据国内外市场的需求，结合长期实践经验及不断引进技术和自我完善，全面考虑到国内和国外钢厂的实际需求研制开发了 R4-12m XF-I、II 连铸机。同时公司拥有加工制造基地，确保及时，高效，保质，保量的完成用户委托的生产任务。

公司生产的连铸机产品不仅畅销国内，还销往蒙古国、越南、印度、阿塞拜疆、乌兹别克斯坦等国家。我公司凭借先进的管理理念，诚信的处世风格，超前的市场意识，独到的设计思路，周到的售后服务，深受广大用户好评。

With total consideration of the actual needs of domestic and foreign steel mills together with the demand of the market home and abroad, we have developed the R4-12 m XF - I, II continuous casting machine(CCM) based on our long-term practical experience, constant introduction of technology and self-improvement. At the same time, our processing and manufacturing base ensures the timely and efficient, high quality delivery of the orders entrusted by our customers.

The CCM products we produced not only sell well in China, but also to the countries as Mongolia, Vietnam, India, Azerbaijan, Uzbekistan and so on. Our company is highly praised by many users for its advanced management concept, honest and reliable style in career, advanced market awareness, unique design thinking and thoughtful after-sales service.

## C 经典案例 Classic case



R6M三机三流100-150方坯



R9M八机八流100-180方坯



R6M二机二流165\*280矩形坯



R8M四机四流100-150方坯  
φ 150、φ 180圆坯



R6M五机五流100-150方坯



R12M三机三流200\*380板坯



## B 钢包车 Buggy ladle



钢包车的主要作用是承载钢水包，在浇注过程中能快速更换钢水包，保证连续浇注的顺利进行。  
钢包车主要由车架、行走机构等部分组成。行走机构采用变频器控制电机，实现快、慢速传动。  
The main function of the buggy ladle is to carry the ladle. In the process of pouring, the ladle can be replaced quickly to ensure the smooth running of continuous casting.  
The buggy ladle is mainly composed of the frame, the walking mechanism and other parts.  
The walking mechanism adopts the frequency converter to control the motor to realize the fast and slow drive.

## C 中包车 Chartered car



中包车的主要作用是承载中间包，在浇注过程中能快速更换中间包，保证连续浇注的顺利进行。  
中包车主主要由两台对称布置的中包车组成。中包车的结构形式为高腿式，主要由车架、行走机构、横向微调机构等部分组成。  
The main function of the medium chartered car is to carry the medium bag (tundish). In the process of pouring, the medium bag can be quickly replaced to ensure the smooth running of continuous casting.  
The medium chartered car is mainly composed of two symmetrical medium chartered vehicles. The structure of the medium car is a high leg type, which is mainly composed of the frame, the walking mechanism and the transverse micro adjustment mechanism.



## C 结晶器 Crystallizer



结晶器：（方坯90x90-200x200、圆坯 $\phi$ 100- $\phi$ 500、矩形坯165x225/280等、板坯200x380、280x280、300x340、340x410、150x1000等、电磁搅拌）

1. 采用管式结晶器，内水套为不锈钢水套。
2. 进出水用O形圈密封，自动接通，安装方便，定位可靠。

Mold: (billet 90x90-200x200, round billet, 100- Phi 500, rectangular billet 165x225/280, slab 200x380, 280x280, 300x340, 340x410, 150x1000, etc., electromagnetic stirring).

1. the tube type crystallizer is used, and the inner water jacket is stainless steel water jacket.
2. water import and export with O ring seal, automatic connection, easy installation, reliable positioning.



## V 振动装置 Vibration device



振动装置：

- 1、整体式设计为国内独创，结构紧凑，运行平稳，安装方便。
- 2、可实施高频小振幅振动，改善铸坯表面质量；
- 3、使用寿命长，适应高拉速。

Vibration device:

1. the overall design of the vibration device is of domestic original, with the characteristics of compact structure, smooth operation, easy to install.
- 2.The high frequency and small amplitude vibration can be carried out to improve the surface quality of the casting billet.
- 3.long service life, adapted to high speed.





拉矫机:

- 1、采用连续矫直技术，降低铸坯变形率，有效防止矫直裂纹产生；结构紧凑，零部件均可单独更换，检修和维护便利；
- 2、采用全水冷型拉矫机，拉矫辊、机架、轴承座均采用水冷，彻底解决拉矫机因高温工作环境而造成的设备事故，减少维护和检修工作；
- 3、采用新加工工艺，拉矫辊为锻造42CrMo，辊子表面堆焊特殊材质，大幅提高拉矫辊使用寿命；
- 4、采用封闭润滑，确保轴承寿命，提高拉矫机作业率，提高铸坯质量。

Pull straightener:

- 1, continuous straightening technology is adopted to reduce the deformation rate of the billet and effectively prevent the straightening cracks from occurring. The structure is compact, parts can be replaced individually, maintenance and repair work are convenient.
- 2, adopting the all water-cooled pull straightening machine, the straightening roller, the frame and the bearing seat are all water-cooled so as to solve the equipment accident caused by the high temperature working environment thoroughly, thus reducing the maintenance and repair work.
3. Using the new processing technology, the straightening roller is forging 42CrMo, the surface of the roller is surfacing with special material, and the service life of the roller is greatly improved.
4. A closed lubrication is used to ensure the life of the bearing, improve the working rate of the straightener and improve the quality of the casting billet.

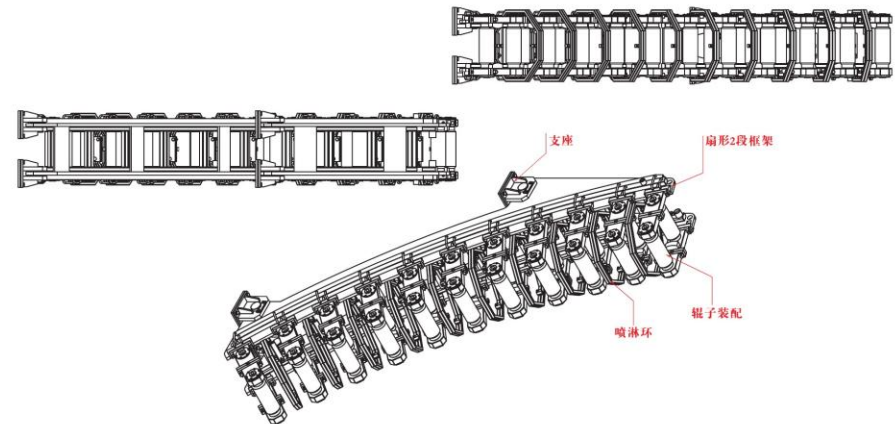


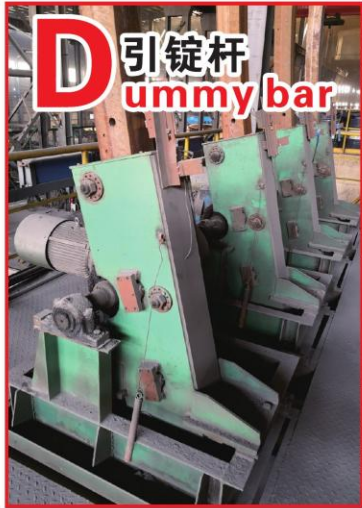
扇形段:

采用整体式全水冷，提高铸坯质量。适用于柔性和刚性引锭杆。

Fan shaped Sector :

The whole water cooling is adopted to improve the quality of the casting billet. It is suitable for flexible and rigid dummy bars.





引锭杆:

形式: 1.刚性引锭杆 2.柔性引锭杆

材质: Q345B 45# 40Cr 42CrMo

Dummy bar:

Form: 1. rigid dummy bar 2. flexible dummy bar

Material: Q345B 45# 40Cr 42CrMo

## S 推钢机 Steel Pusher





**H** 液压站  
Hydraulic station

### 液压站

液压站采用全自动控制，出厂前各项参数均已调试完毕，使用时压力按设定值自动调节，压力高时自动泄压，压力低时自动补压。液压站配备蓄能装置，能充分保护液压泵和电机，延长使用寿命。

### Hydraulic station

The hydraulic station is fully automatic controlled. All parameters of the equipment in the factory have been debugged. The pressure is automatically adjusted according to the set point when it is used. When the pressure is high, the pressure is released automatically, and the pressure is automatically supplemented when the pressure is low. The hydraulic station is equipped with energy storage device, which can fully protect the hydraulic pump and motor, and prolong the service life.



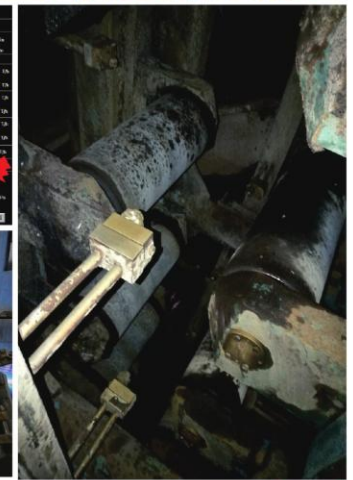
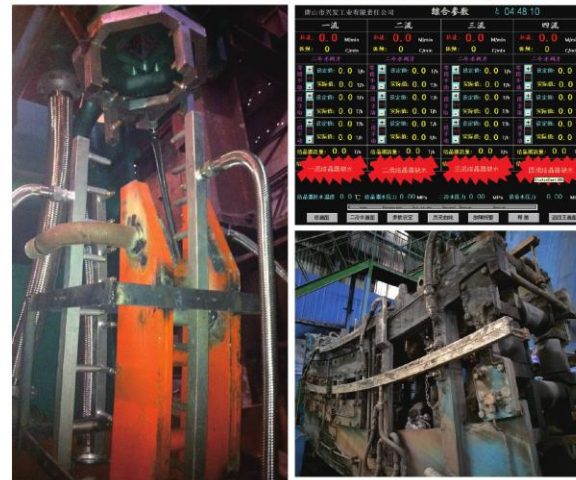
## C 冷却系统 ooling system

### 冷却系统:

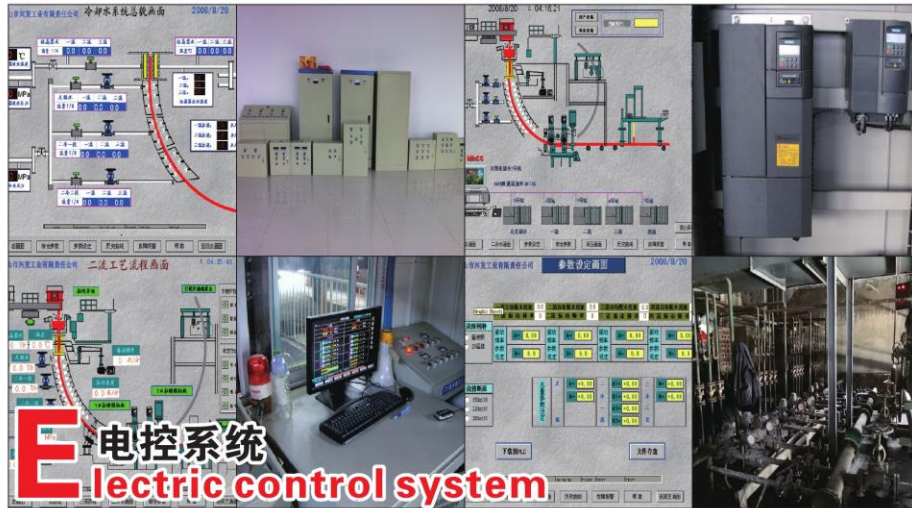
冷却系统由零段水、水条、喷嘴、不锈钢金属软管等组成，采用304不锈钢制作而成，耐高温、耐腐蚀，使用寿命长。

### Cooling system:

The cooling system is made up of zero section water, water bar, nozzles and stainless steel metal hoses. It is made of 304 stainless steel. It has high temperature resistance, corrosion resistance and a long service life.







电控系统

形式:

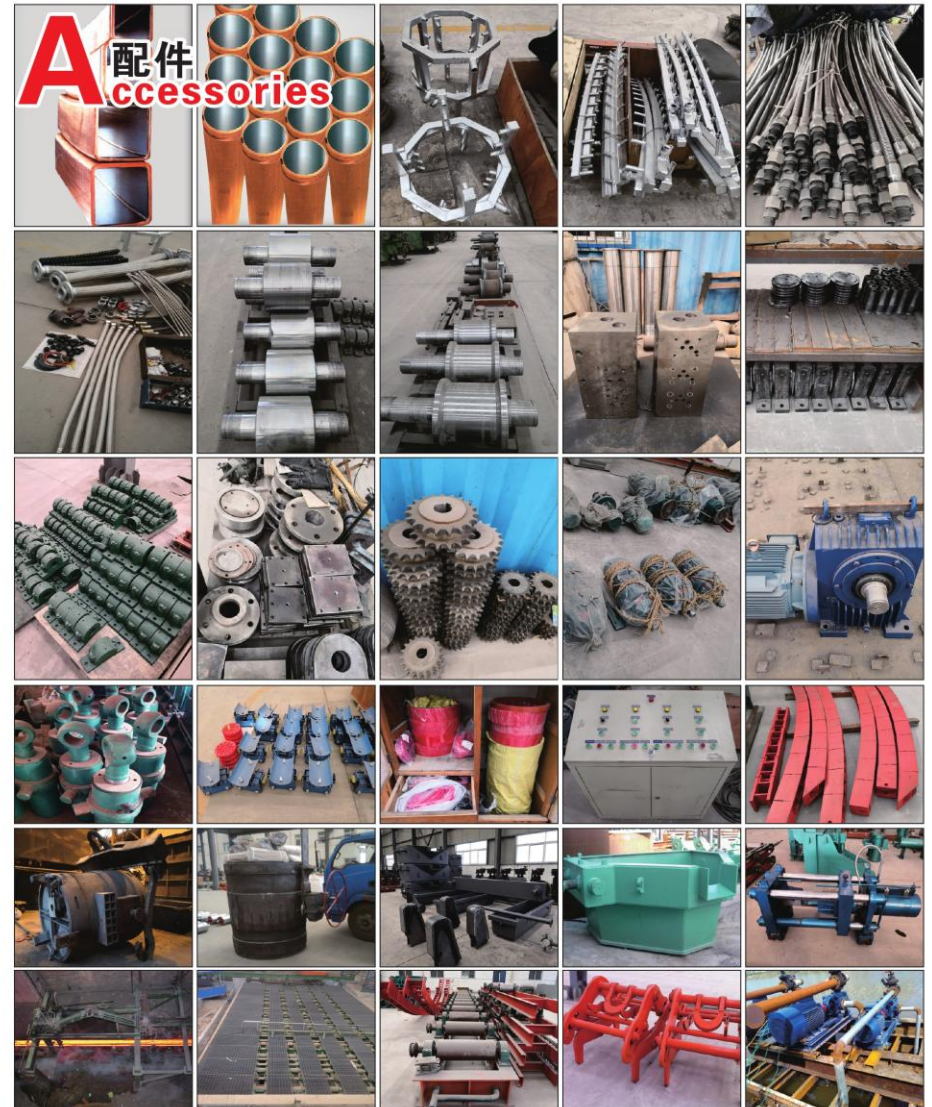
1. 手动控制系统
2. PLC自动化控制系统 (西门子)

PLC自动化控制系统采用全网络、全数字化、分散式控制结构。自控系统采用二级控制系统：生产管理级和现场控制级。上位机采用标准的人机接口（HMI）作为管理级、基础自动化系统（PLC）作为控制级，通过通讯网络组成完善的自控系统，完成相应的电控设备或变频器的自动控制和联锁、数据采集和处理等，组成电控、仪控、计算机控制的“三电”系统结构。

Electric control system

1. Manual control system
2. PLC automation control system (Siemens)

The PLC automation control system adopts the whole network, the whole digitization, the distributed control structure. The automatic control system adopts the secondary control system: production management level and field control level. PC with a standard human-machine interface (HMI) as the management level, basic automation system (PLC) as control level, through the communication network of perfect automatic control system, complete the corresponding electric equipment and automatic control of frequency converter and interlock, data acquisition and processing, etc., composed of electric control, instrument control and computer control system of "so called three controls" structure.





**设备简介:**

汽车专用升降机是专用汽车升降机的专用设备，可采用机械或液压两种方式提升车辆，该设备运行平稳能耗小，安全可靠，用于停车场配套建设。根据驱动方式不同可分为卷扬式、曳引式及液压式三种。

**设备特点:**

◇适合提升大载重，安全性能高，升降平稳，操作简单方便。简单适用于各种建筑设计，可无需顶层机房位置，节省建筑物空间。

◇汽车升降机主要用各种工作层间货物上下运送，地上和地下车库层间汽车举升等。

◇产品液压系统设置防坠、超载安全保护装置，各楼层和升降台工作台面均可设置操作按钮，实现多点控制。

◇产品结构坚固，承载量大，升降平稳，安装维护简单方便，是经济实用的低楼层间替代电梯的理想货物输送设备。此类立体停车设备适用于4s店、别墅区等区域使用，地上地下均可。

**Equipment introduction:**

Auto lift is special equipment for special purpose vehicle which can use two ways of mechanical or hydraulic to promote vehicle. The equipment can be operated smooth and low energy consumption, safe and reliable. According to the different driving modes, it can be divided into three type that winding type, traction type and hydraulic type.

**Equipment characteristics:**

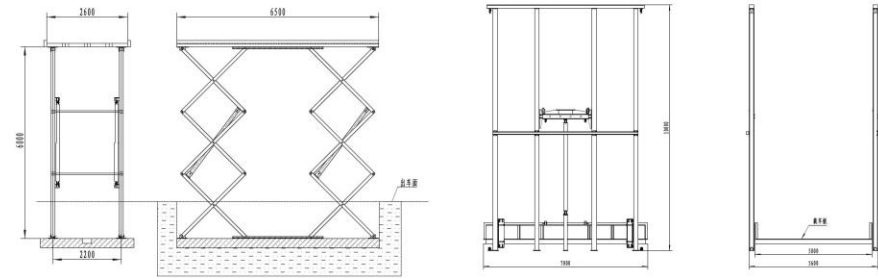
◇Suitable for lifting large load with high safety performance, lifting is smooth and steady. The operation is simple to be applied to all kinds of architectural design, there is no the top floor room for saving the building space.

◇Auto lift is mainly used in the working layer among a various transportation of vehicle go and between ground and underground garage etc.

◇Hydraulic system of products is set against falls and the overload safety device. Each floor and lifting worktable can be set the operation button to achieve the multipoint control.

◇Product structure is firm and big load. Stable lifting, installation and maintenance are simple and convenient. It is the ideal goods transportation equipment which can replace the elevator between economical and practical low floors.

This kind of three-dimensional parking equipment is suitable for the areas such as the 4S shop, the villa area and so on. It can be used on both of ground and underground.



项目Item	单位Unit	技术性能参数Technical specifications
容车尺寸Capacity vehicle size	mm	≤5300*2000*1950
容车重量Capacity vehicle weight	kg	≤3000
容车数量Capacity vehicle quantity	辆number	1
定额速度Speed quota	m/min	升降Lifting4-5
电机功率Motor power	kw	升降Lifting3.7
驱动方式Driving mode		链条、液压、钢丝绳Chain, hydraulic, wire rope
操作方式Operation mode		键盘操作、触摸屏、ID卡 Keyboard operation, touch panel, ID card
动力电源Power source		3N、380V、50HZ





# M 金属围栏 Metal fence

我公司主要生产围栏杆、异形钢、铸件。有专业的工程师研发各种产品。主要产品有：T型桩、L型桩、Y型桩、U型桩、篱笆桩、牧栏杆等。

我公司为牧场、农场、林场、高速公路以及庭院美化提供高质量的以导轨钢和普通钢生产加工的各种篱笆桩、Y型桩、T型钢等围栏杆及配件。

我公司的L型桩、Y型桩及围栏等，主要用于葡萄园、农业、核电、工业场所或者国家重要部门的安防等。

所有产品均符合标准：GB/T 19000-2000 IDT 质量管理和质量保证标准。

Our company mainly produces fence bars, special-shaped steel and castings. There are professional engineers to develop a variety of products. The main products are T piles, L piles, Y piles, U piles, fence posts, animal railings and so on.

Our company provides high quality fence posts, Y pile, T steel and other fence posts and accessories for ranch, farm, forest farm, highway and garden beautification.

Our L piles, Y piles and fences are mainly used for protection in vineyards, agriculture, nuclear power, industrial sites or important national sectors.

All products meet the standard: GB/T 19000-2000 IDT quality management and quality assurance standard.

## 产品分类 (Produato catego) :

- 1.黑杆+ 静电喷涂 (PVC-coated steel fence post)
- 2.黑杆+ 热镀锌 (Hot-dipgalv steel fence post)
- 3.黑杆+ 电镀锌+ 静电喷涂 (Electrplating and PVC-coated steel fence post)

## 黑杆+ 静电喷涂产品描述 (PVC-coated steel fence post) :

护栏桩表面经过抛丸，调直处理之后，采用先进的喷涂设备进行静电喷涂。该产品具有表面光泽、美观、涂层附着力强等优点。

This fence pos surface is treated by shot blasting, straightening, and then be electrostatic sprayed by the advanced spraying equipment. The surface can be beautiful and gloss, the paint-coat has strong adhesion.

## 黑杆+热镀锌产品描述 (Hot-dipgalv steel fence post) :

该产品具有较强抗腐蚀性，美观等优点。

The product has strong corrosion resistance and beautiful appearance.

## 黑杆+电镀锌+静电喷涂产品描述 (Electrplating and PVC-coated steel fence post) :

该产品具有PVC喷涂带来美观的同时，具有耐腐蚀力强，使用寿命长等优点。

The product has the advantages of PVC spray, beautiful appearance, strong corrosion resistance and long service life.



## T型桩 T pile

### 产品规格(Production specification):

型号MM Model	壁厚MM wall thickness	重量KG/M weight	长度MM length						
T30X30	2.7	1.2	100	125	150	175	200	225	250
	2.8	1.25							
	3.0	1.32							
	3.3	1.46							
	3.5	1.55							
T35X35	3.5	1.83							
	4.0	2.0							



## L型桩 L pile

### 产品规格(Production specification):

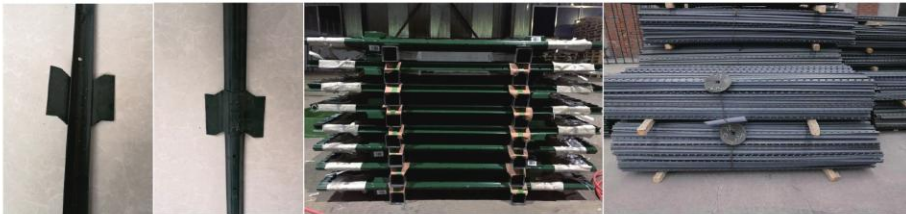
型号MM Model	壁厚MM wall thickness	重量KG/M weight	长度MM length					
L25X25	2.6	0.98	100	120	150	175	200	225
	3.0	1.1						



## Y型桩 Y pile

产品规格(Production specification):

Y型桩规格描述 Specification of Y type pile									
型号kg/m <sup>2</sup>	生产工艺	长度(米)							
Model	Production process	length							
1.58-2.04	冲孔削尖涂漆 Punch sharpening painting	0.45	0.6	0.9	1.35	1.65	1.8	2.1	2.4
	冲孔削尖热镀锌 Punch sharpening hot galvanized								



## U型桩 U pile

产品规格(Production specification):

U型桩规格描述 Specification of U type pile					
产品编号	规格	长度B (mm)	孔数	U型钩数目	长度A (mm)
Product number	Specifications	length B	The number of holes	Number of U type hook	length A
UP36LD	36"	914.4	4	4	604.4
UP48LD	48"	1219	6	6	909
UP60LD	60"	1524	8	8	1214
UP72LD	72"	1829	10	10	1519

## S 螺旋摆动缸 Spiral wobble cylinder



螺旋摆动缸结构设计紧凑,采用整体的滚子轴承,能承受径向载荷、止推载荷和弯矩载荷;具有扭矩大、体积小、摆动角度设计灵活、误差小、无泄漏、易于安装等显著优点;广泛应用于高空作业车/平台、混凝土机械、路面类机械、矿山隧道类机械、环卫机械、建筑机械、阀门控制、加工中心、农业机械、海事工业以及需要一定角度旋转的设备中。

The structure of the spiral wobble cylinder is compact and adopts the integral roller bearing, which can bear radial load, thrust load and moment load. It has the advantages of large torque, small volume, flexible swing angle design, small error, no leakage, easy installation and so on. It is widely used in high altitude work car / platform, concrete machinery and pavement. Machinery, mine tunnel machinery, sanitation machinery, construction machinery, valve control, processing center, agricultural machinery, maritime industry, and equipment that need a certain angle to rotate.

## A 应用领域 Application area



垃圾车  
关节臂及垃圾桶的提升



矿山设备  
推进器及钻臂回转



高空作业平台  
平台、工作篮及起重臂的转向